



Parts Catalogue

GSV1000

Feb 2023
Ver.2

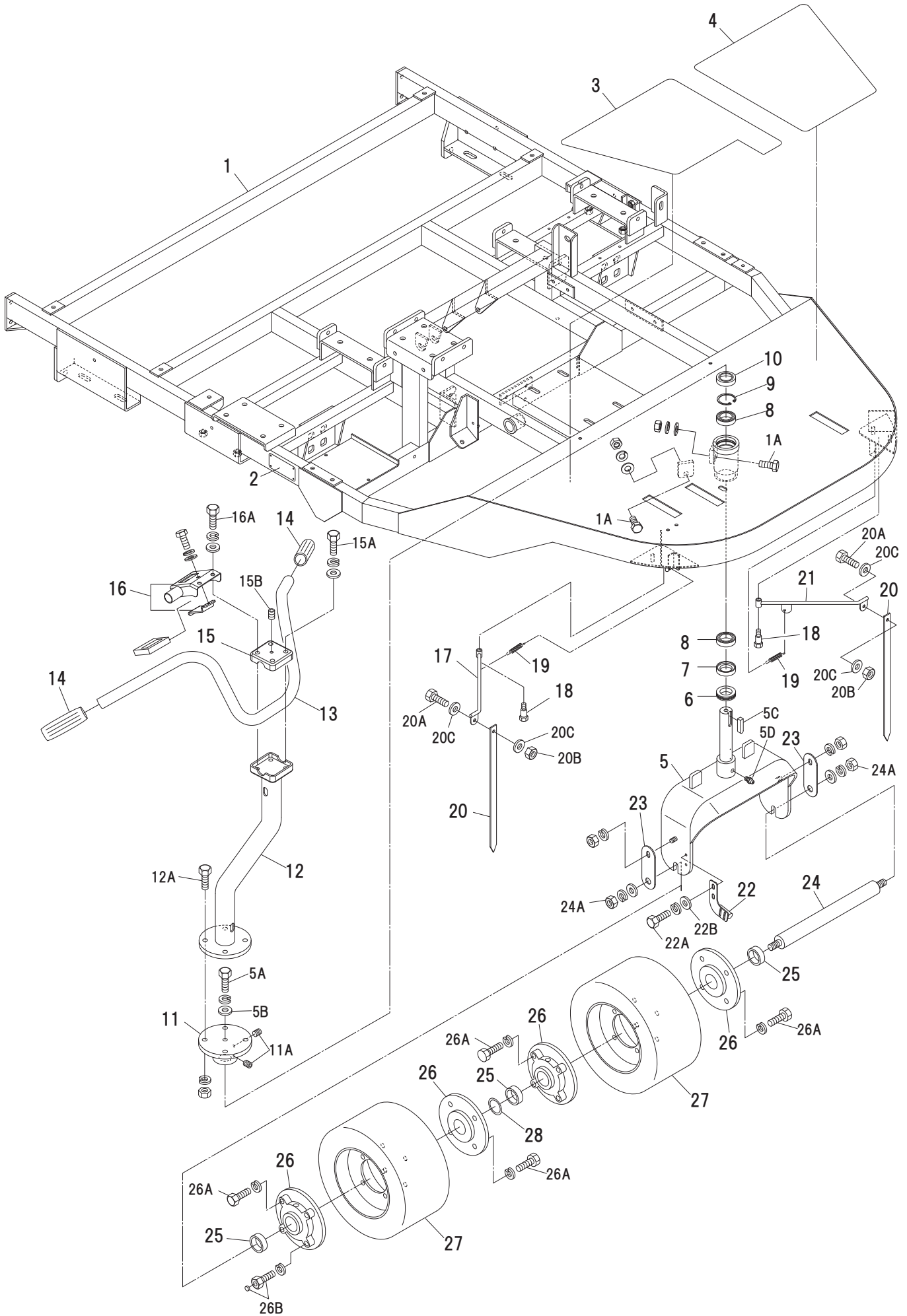
Contents

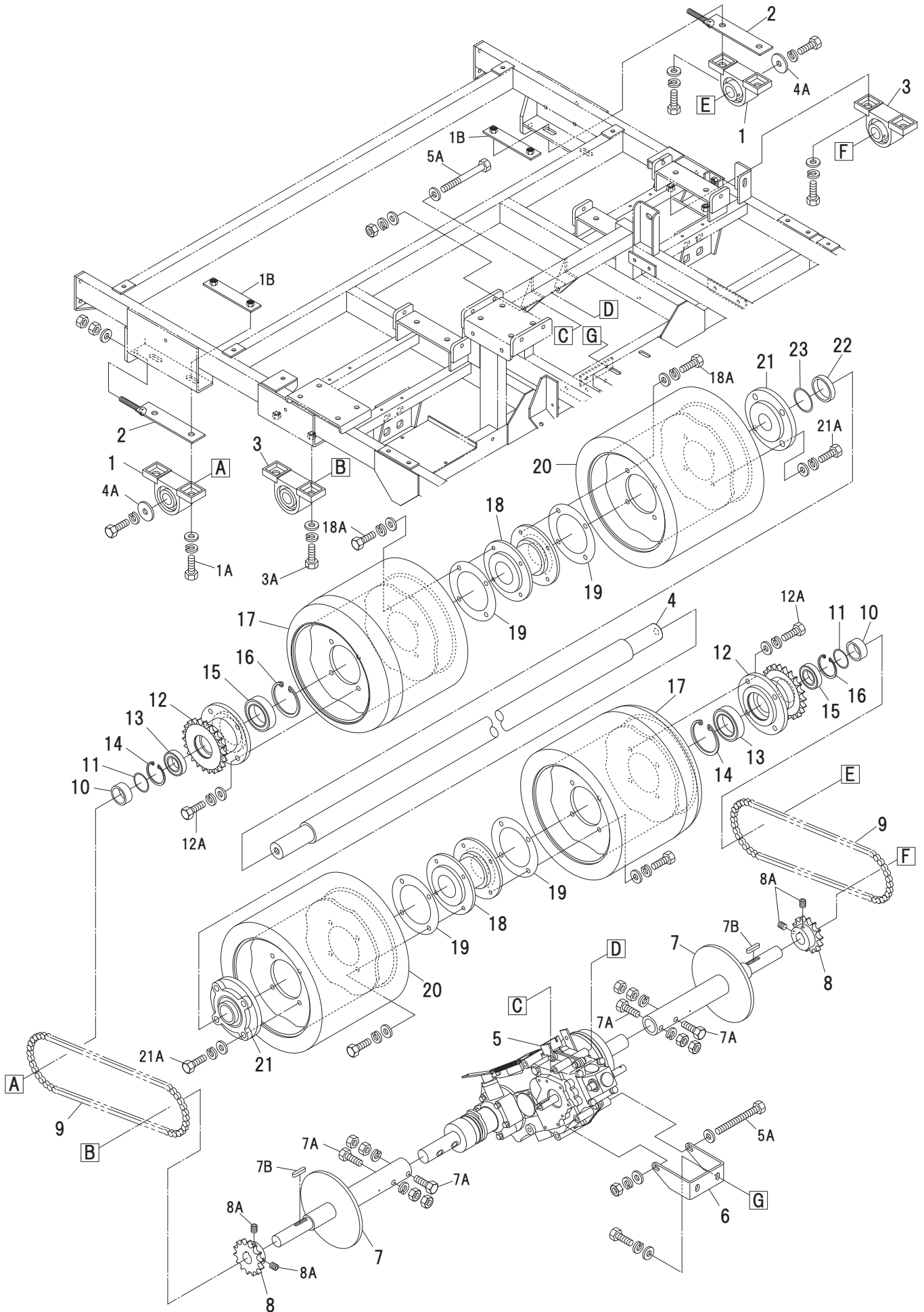
A	Front	P.1~2
B-1	Rear Urethane.....	P.3~4
B-2	Rear Rubber	P.5~6
C	Conveyor	P.7~8
D	Hopper	P.9~10
E	Engine	P.11~12
F	Work1	P.13~16
G	Work2	P.17~18
H	Transmission	P.19~20
I	Pedal·Wire	P.21~24
J	Wiring	P.25~26
K	Drag Brush.1	P.27~28
L	Drag Brush.2	P.29~30
M	Drag Brush.3	P.31~32
N	Decal	P.33~34

※ 部品注文の際は必ず見出番号・部品コード・部品名・数量・機体番号を明記してご注文願います。
※ 製品改良等により予告なく仕様変更になる場合がございます。予めご了承ください。

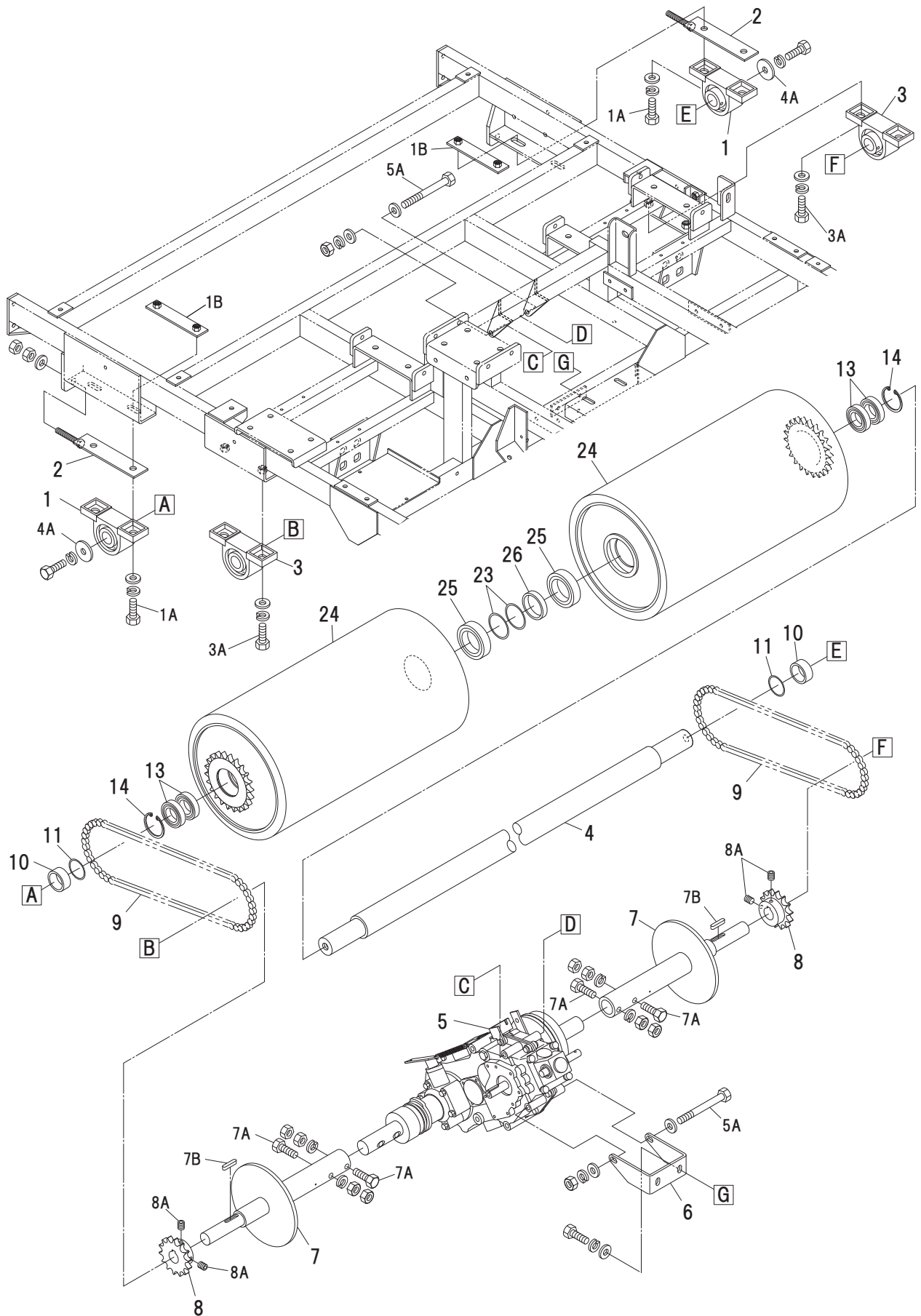
GSV1000

A. Front



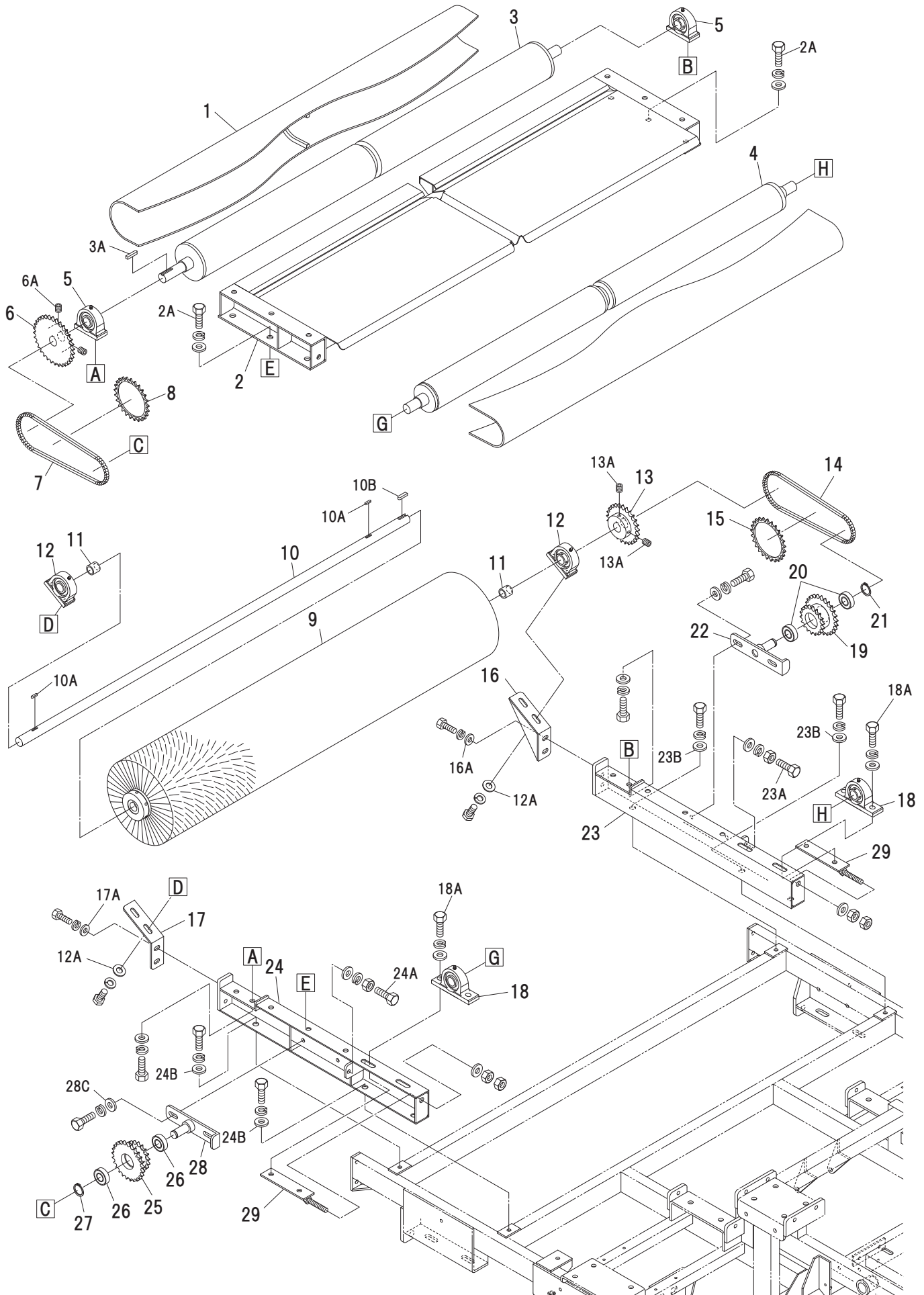


GSV1000 B-2. Rear Rubber tire



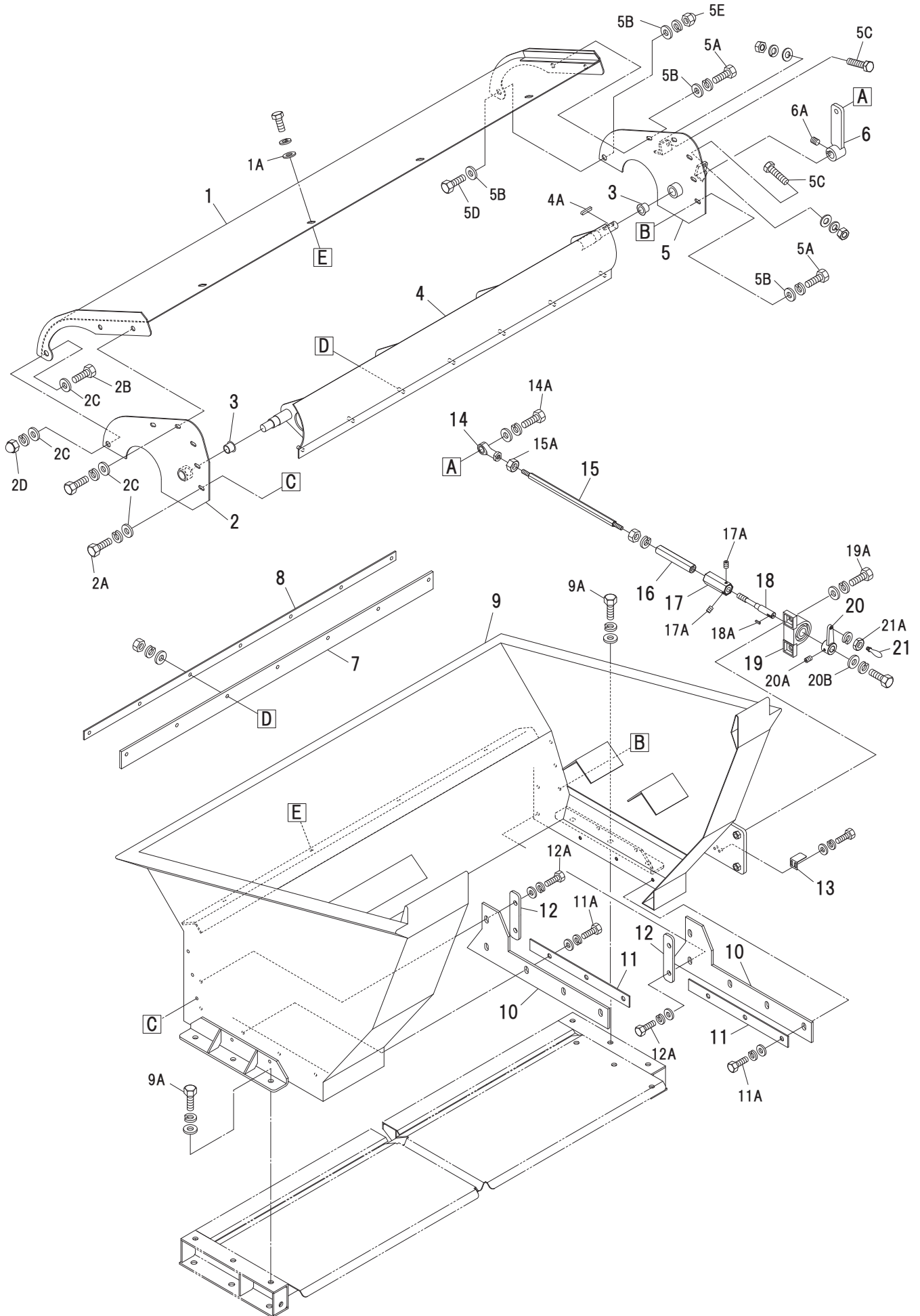
GSV1000

C. Conveyor



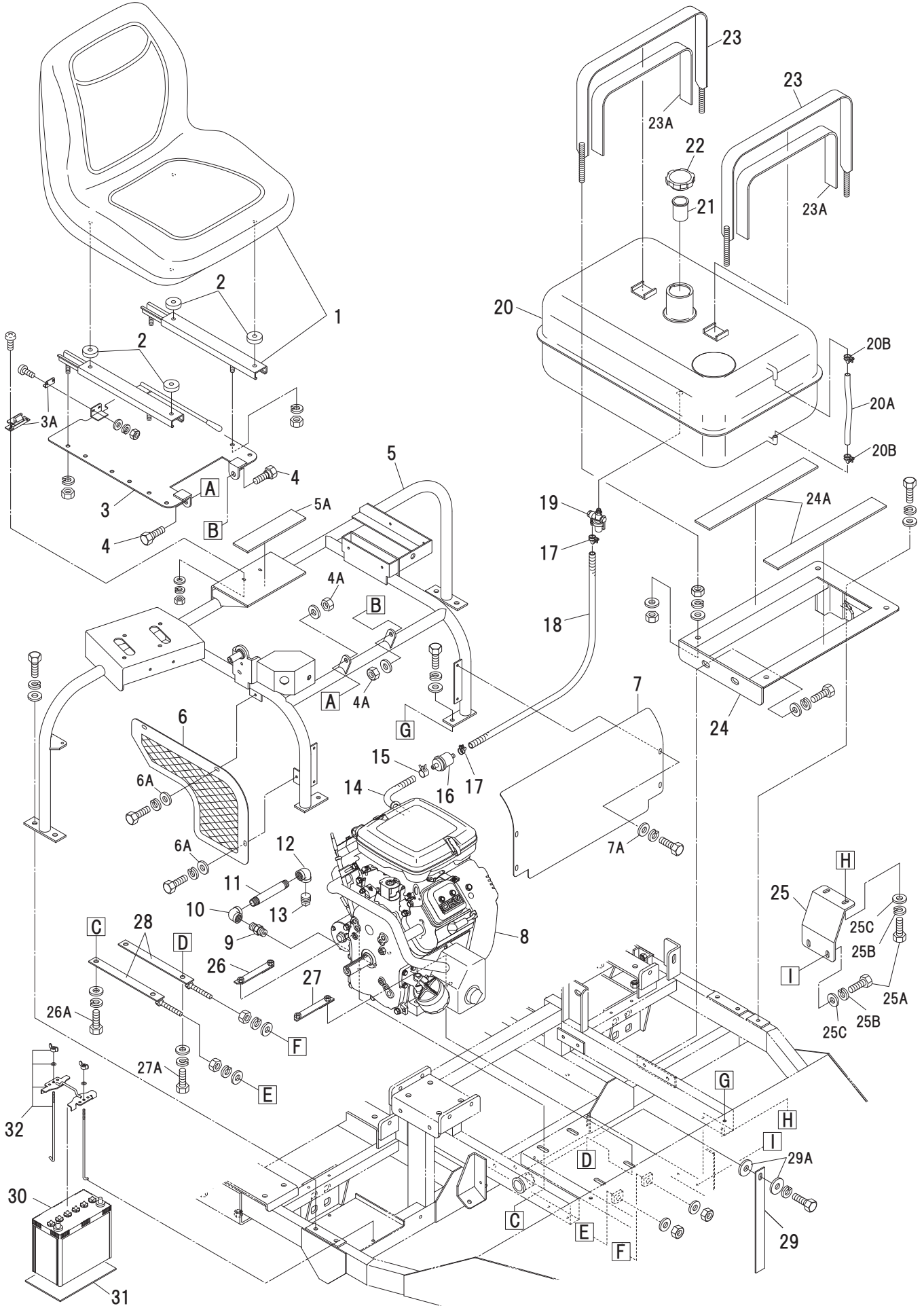
GSV1000

D. Hopper



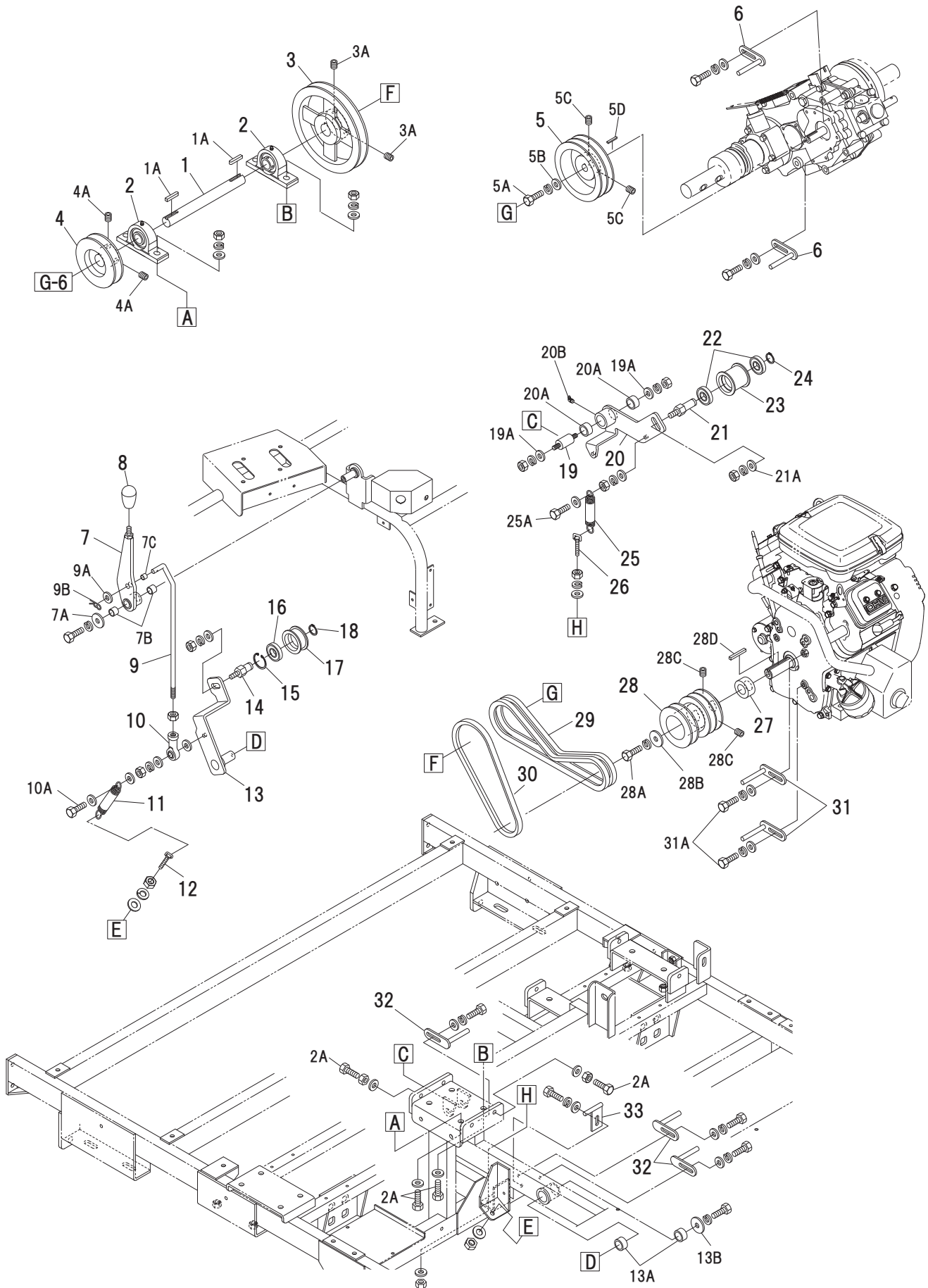
GSV1000

E. Engine



GSV1000

F. Work 1

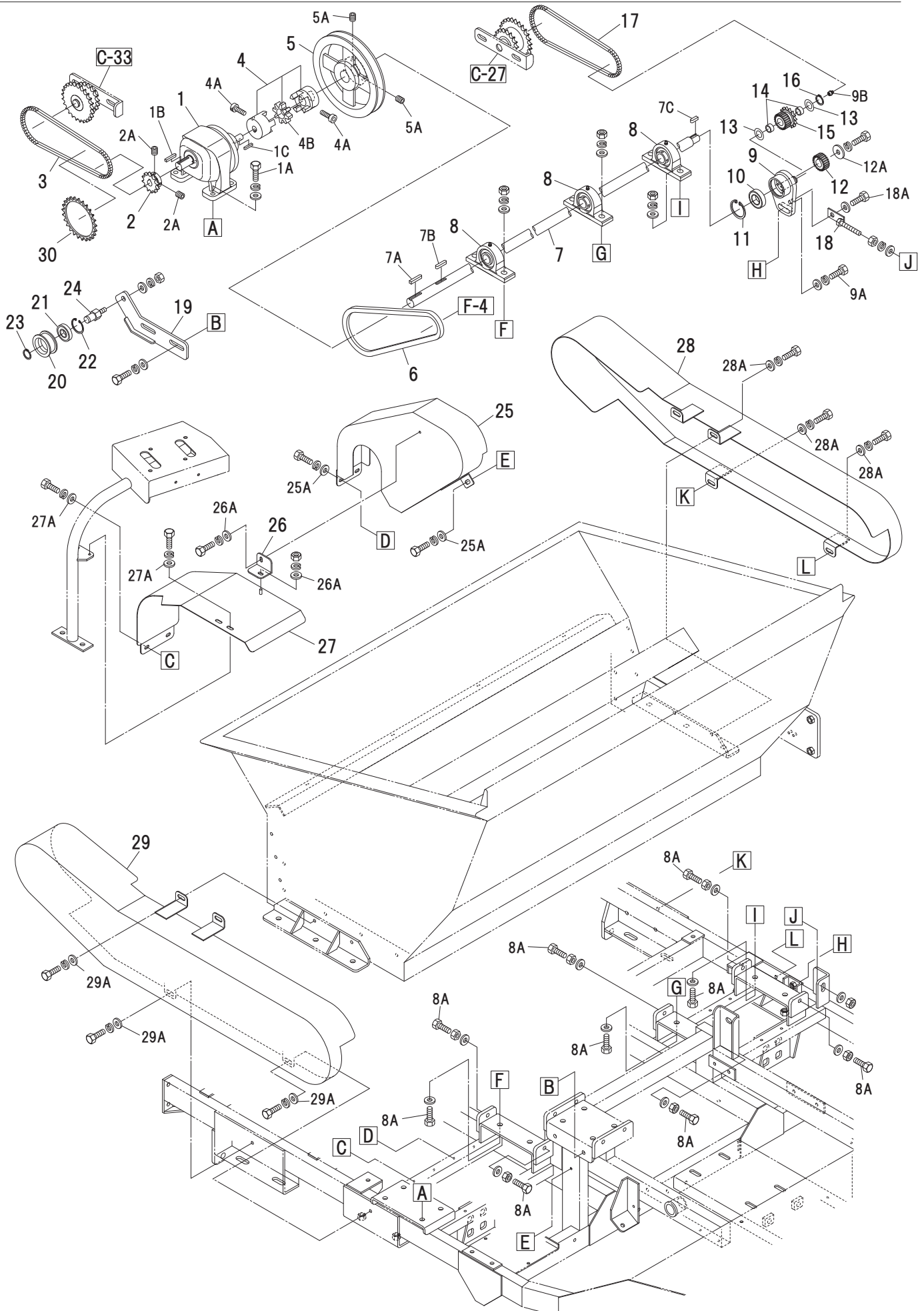


GSV1000

No.	Code	Parts Name	Qt	Specification	Note
F- 1	K22605200	Intermediate Shaft	1		
F- 1A	K04023501	Key 7 × 7 × 35 Single round	2		
F- 2	K03010500	Pillow bearing UCP205	2		
F- 2A	K09104000	M10 × 40 Bolt	8		
F- 3	K22604800	Working intermediate pulley A	1	7-B-1	
F- 3A	K09080890	M8 × 8 Hollow set	2		
F- 4	K22604900	Working intermediate pulley B	1	4-B-1	
F- 4A	K09080890	M8 × 8 Holo set	2		
F- 5	K22604700	Transmission Pulley	1	6-B-2	
F- 5A	K09081600	M8 × 16 Bolt	1		
F- 5B	K09080203	M8 Large washer φ 30 × 3.2	1		
F- 5C	K09080890	M8 × 8 Holo set	2		
F- 5D	H20805408	Key 5 × 5 × 27 One side round	1		
F- 6	K22608400	Belt holder C	2		
F- 7	K22603501	Work tension lever	1		
F- 7A	K09080202	M8 Large washer φ 26 × 2.6	1		
F- 7B	K0B1612DU	Bush K5B1612	2		
F- 7C	K0B1008DU	Bush K5B1008	1		
F- 8	K22353600	Lever grip	1	IMAO OG40G	
F- 9	K22604001	Working tension lot	1		
F- 9A	K09100200	M10 Washer	Suitably		
F- 9B	K21353600	R Pin	1	φ 10	
F- 10	K09PHS10R	Rod end PHS-10	1		
F- 10A	K09104000	M10 x 40 bolt	1		
F- 11	K30442101A	Belt tensioning spring	1		
F- 12	K21814200	Spring pull bolt	1		
F- 13	K22606401	Working tension arm	1		
F- 13A	K0B2515DU	Bush K5B2515	2		
F- 13B	K09080204	M8 Large washer φ 40 × 3.2	1		
F- 14	K22606300A	Working tension pulley shaft	1		
F- 15	K08603500	Snap ring R-35	1		
F- 16	K02202700	Bearing 6202LLU	1		
F- 17	K21808300A	Working tension pulley	1		
F- 18	K08501500	Snap ring S-15	1		
F- 19	K21617100	Traveling tension shaft	1		
F- 19A	K09100204	M10 Large washer φ 30 × 3.2	2		
F- 20	K22606500	Traveling tension arm	1		
F- 20A	K0B2515DU	Bush K5B2515	2		
F- 20B	K31560400	Grease nipple 1/8 45° Grease nipple 1/8 45°	1		
F- 21	K22603100	Traveling tension pulley shaft	1		
F- 21A	K09120200	M12 Large washer φ 32	1		
F- 22	K02203500	Bearing 6203LLU	2		
F- 23	K30606600	Tension pulley B2	1		
F- 24	K08501700	Snap ring S-17	1		
F- 25	K30442101A	Belt tension spring	1		
F- 25A	K09082500	M8 × 25 Bolt	1		
F- 26	K21814200	Spring pull bolt	1		
F- 27	K22608100	Engine shaft collar	1		
F- 28	K22604600	Engine pulley	1		
F- 28A	KU3810000	UNF 3/8 × 1-24 bolt	1		
F- 28B	K09100204	M10 Large washer φ 40 × 3.2	1		
F- 28C	K09080890	M8 × 8 Hollow set	2		
F- 28D	K04065000	Key 1/4 × 1/4 × 50	1		
F- 29	K01384300	V belt LB-43	2	Super AG-X	For traveling
F- 30	K01383600	V belt LB-36	1	Super AG-X	For work
F- 31	K22607600	Belt holder A	2		
F- 31A	K22650300	UNF 5/16-24-16 bolt	2		
F- 32	K22607600	Belt retainer A	3		
F- 33	K21607702	Belt holder B	1		

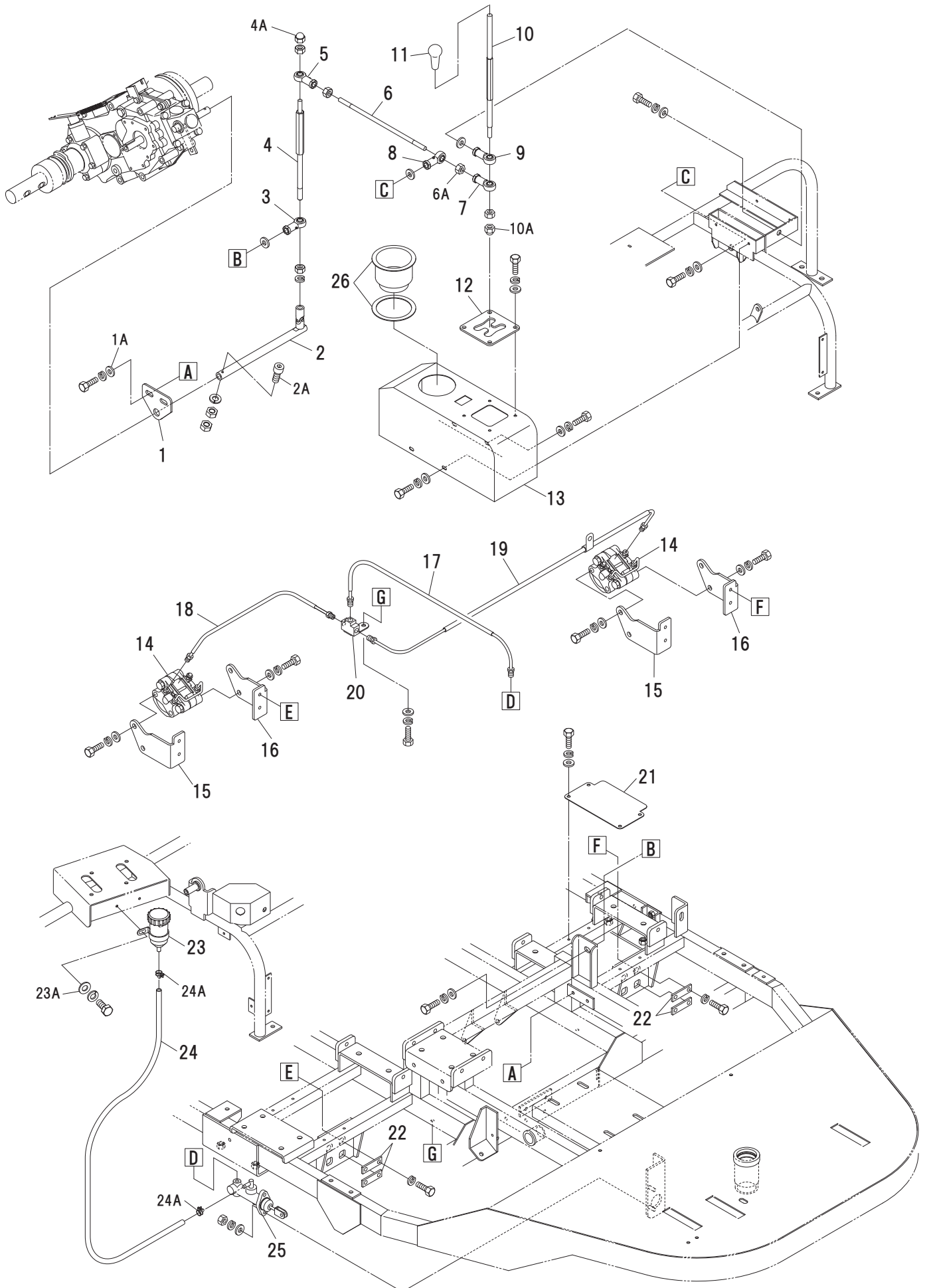
GSV1000

G. Work 2



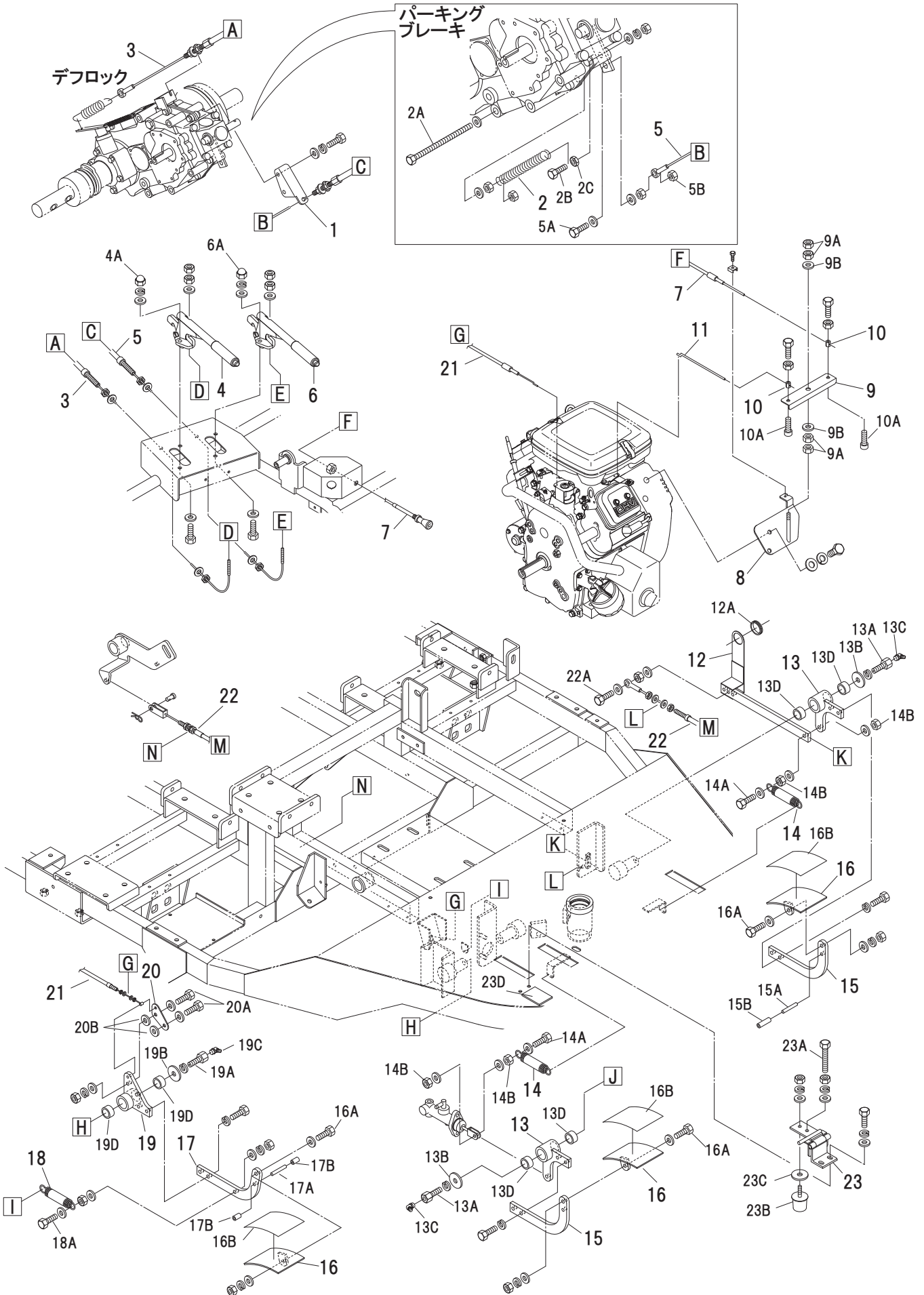
GSV1000

H. Transmission



GSV1000

I. Pedal. Wire

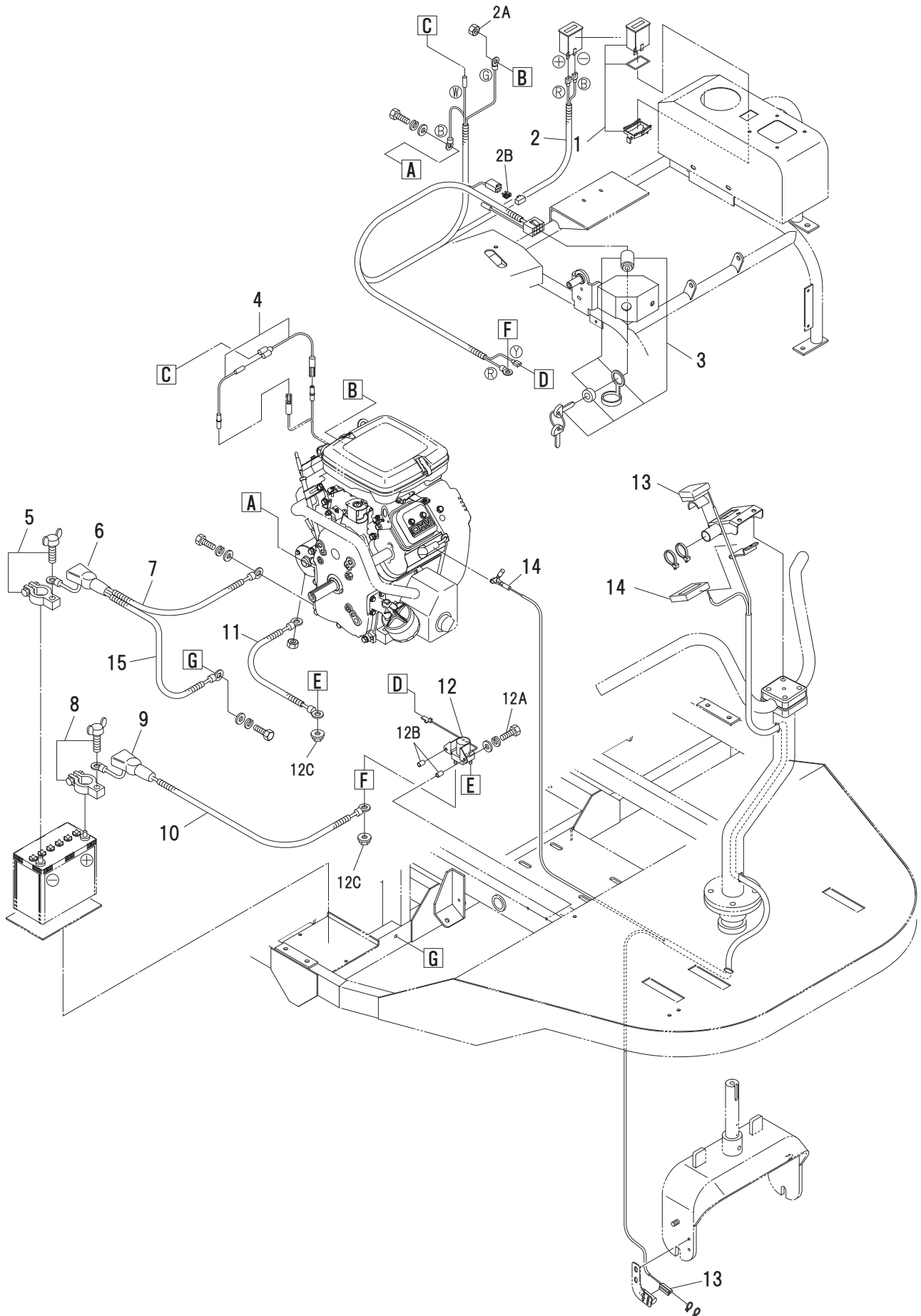


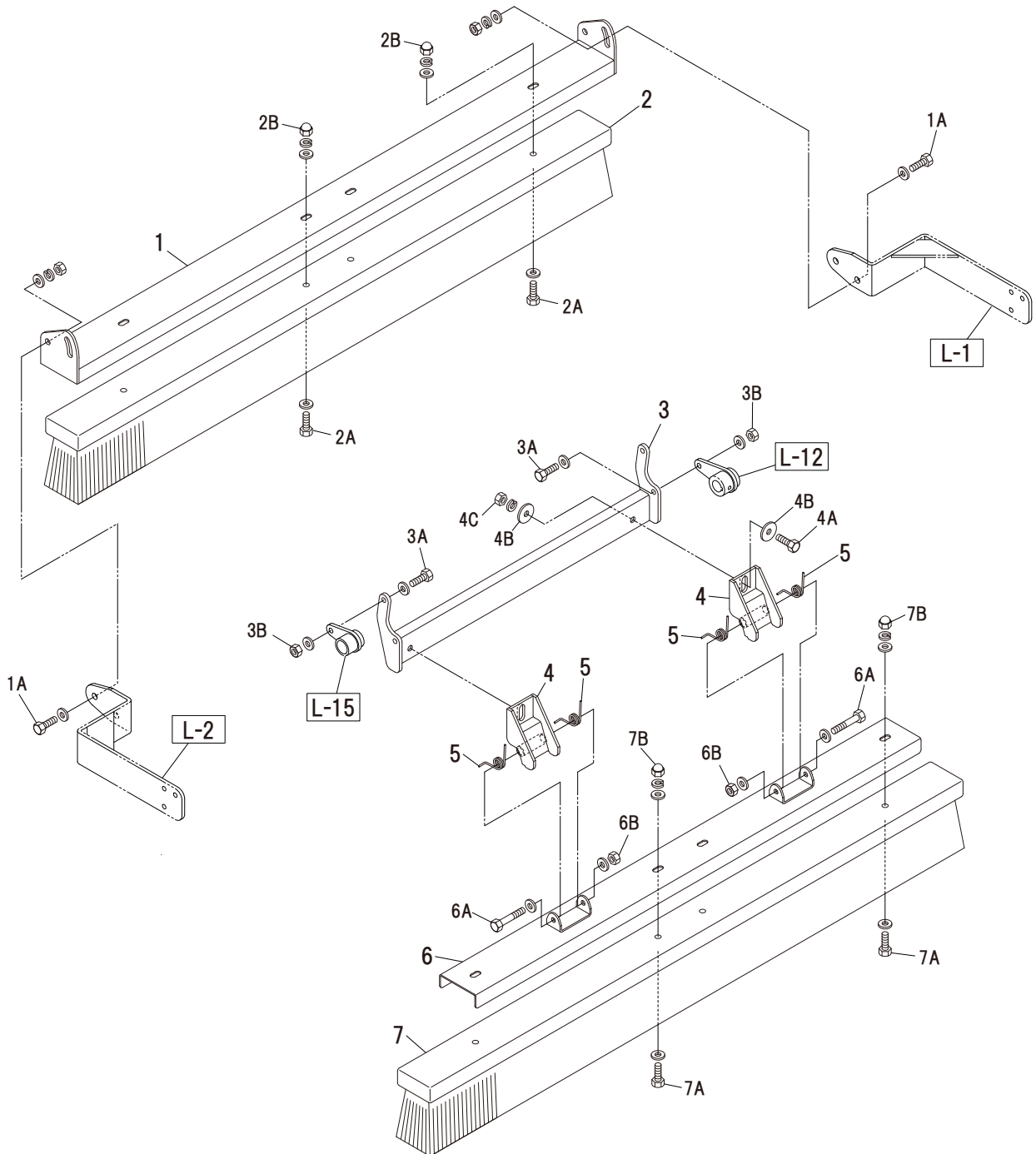
GSV1000

No.	Code	Parts Name	Qt	Specification	Note
I- 1	K21613401	Side brake wire fitting	1		
I- 2	K20106700	Brake return spring	1	φ 1.2 × 11 × 82	
I- 2A	K09082001	M8 × 120 bolt	1		
I- 2B	K09062000	M6 × 20 Bolt	1		
I- 2C	K09060107	M6 3-class nuts	1		
I- 3	K21610702A	Diff lock wire	1		
I- 4	K20241000	Diff lock lever	1		
I- 4A	K09080104	M8 bag nut	2		
I- 5	K21610702A	Parking brake key wire	1		
I- 5A	K09083000	M8 × 30 bolt	1		
I- 5B	K09080103	M8 U nut	1		
I- 6	K20241000	Side brake lever	1		
I- 6A	K09080104	M8 bag nut	2		
I- 7	K32850116	Choke wire	1		
I- 8	K14903000	Choke wire mounting stand	1		
I- 9	K14903100	Choke wire reversing plate	1		
I- 9A	K09080109	M8 nut SUS	4		
I- 9B	K09080209	M8 Washer SUS	2		
I- 10	K31532200	Wire fixing bracket	2		
I- 10A	K09040641	M4 × 6 Hexagon socket head cap bolt	2		
I- 11	K32850117	Piano wire	1	110L	
I- 12	K22602301	Clutch link bar	1		
I- 12A	K22650500	Grommet	1	C-30-NG-79-P-EP-UL	
I- 13	K22607000	Clutch/brake pedal boss	2		
I- 13A	K31508100	Dump main arm retaining bolt	2		
I- 13B	K31504200	M10 Large washer φ 35 × 3	2		
I- 13C	K31560410	Grease nipple 1/8 90deg.	2		
I- 13D	K0B2515DU	Bush K5B2515	4		
I- 14	K21612200	Pedal return spring	2	φ 2.0 × 18 × 115	
I- 14A	K09085000	M10 × 50 Bolt	2		
I- 14B	K09080103	M10 U nut	4		
I- 15	K22607500	Clutch/brake pedal arm	2		
I- 15A	K09085060	Roll pin φ 8 × 50	1		
I- 15B	K21602633A	φ 8 hose	1	35mm	
I- 16	K22607300	Pedal	3		
I- 16A	K09082500	M8 × 25 Bolt	3		
I- 16B	K22650600	Non-slip seal	3	90 × 120	
I- 17	K22607400A	Accelerator pedal arm	1		
I- 17A	K09085060	Roll pin φ 8 × 50	1		
I- 17B	K21602633A	φ 8 hose	2	20mm	
I- 18	K21612200	Pedal return spring	1	φ 2.0 × 18 × 115	
I- 18A	K0985000	M8 × 50 Bolt	1		
I- 19	K22607000	Accelerator pedal boss	1		
I- 19A	K31508100	Dump main arm retaining bolt	1		
I- 19B	K31504200	M10 Large washer φ 35 × 3	1		
I- 19C	K31560410	Grease nipple 1/8 90deg.	1		
I- 19D	K0B2515DU	Bush K5B2515	2		
I- 20	K22607200	Gas pedal wire holding plate	1		
I- 20A	K09082500	M8 × 25 Bolt	2		
I- 20B	K09080202	M8 large washer φ 25 × 2.3	4		
I- 21	K22603000A	Gas pedal wire	1		
I- 22	K22603301	Traveling clutch wire	1		
I- 22A	K09083000	M8 × 30 bolt	1		
I- 23	K22608600	Pedal stopper	1		
I- 23A	K09086500	M8 × 65 bolt	1		
I- 23B	K31750300	Stopper rubber	1	KI-40	
I- 23C	K09080204	M8 Large washer φ 40 × 3.2	1		
I- 23D	KRB054010	Rubber plate 5 × 40 × 50L	1		

GSV1000

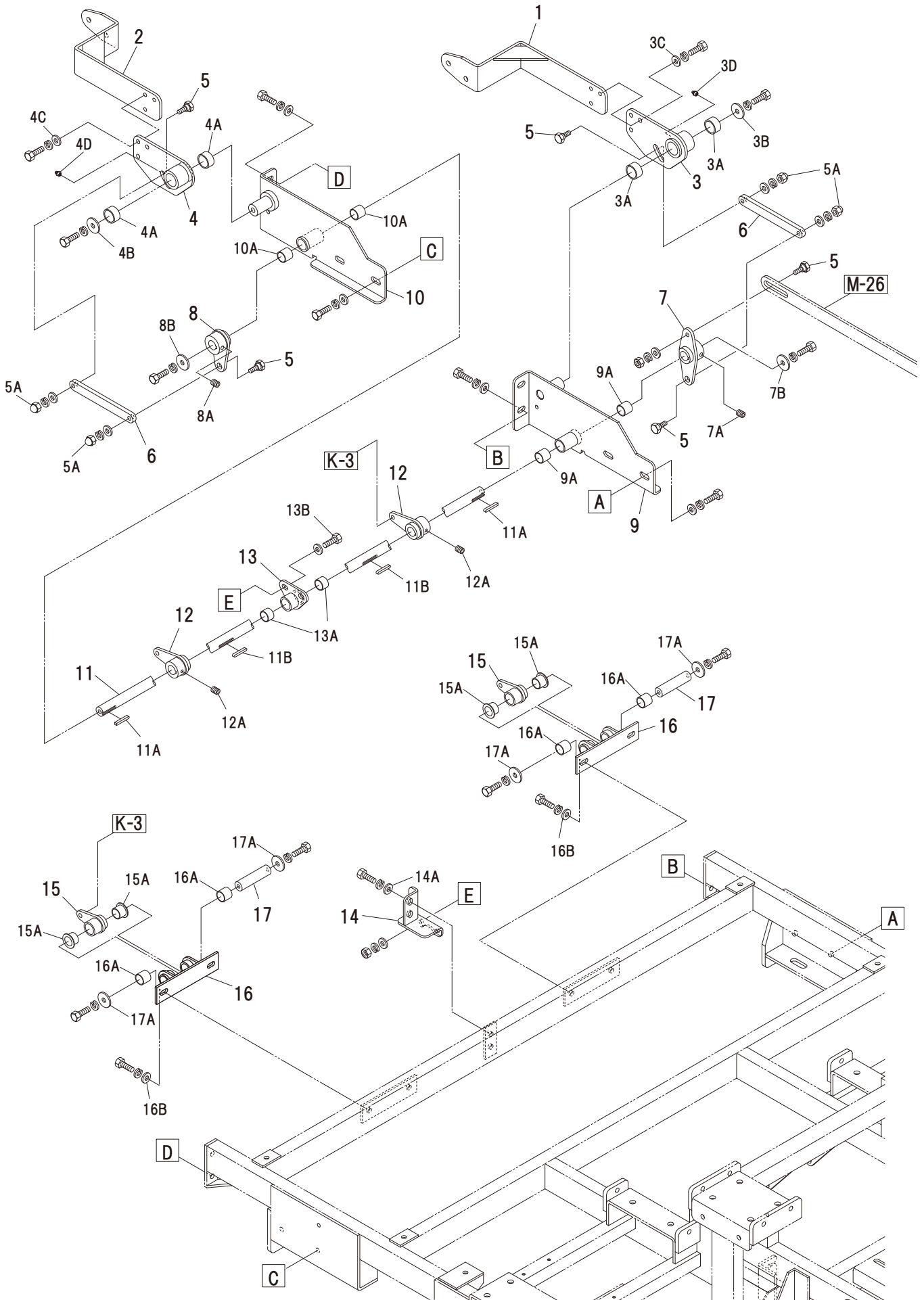
J. Wiring





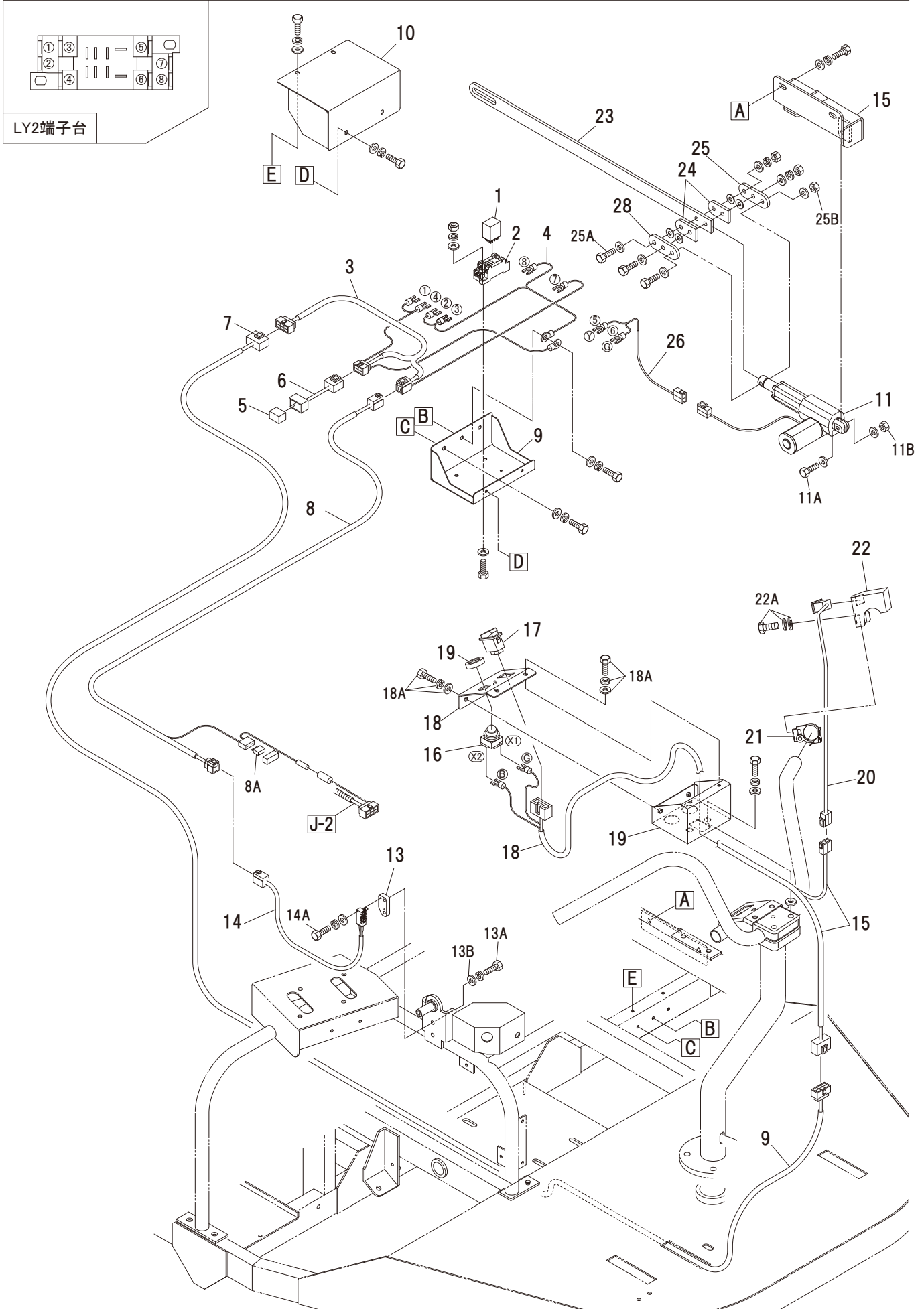
GSV1000

L. Drag Brush 2



GSV1000

M. Drag Brush 3

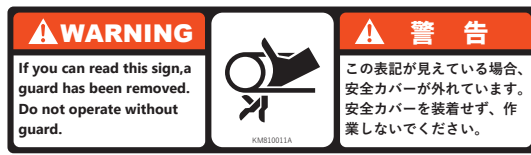


GSV1000

N. Decal



1



2

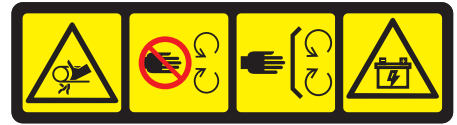


5



3

4



6



7



8



9



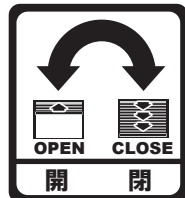
10



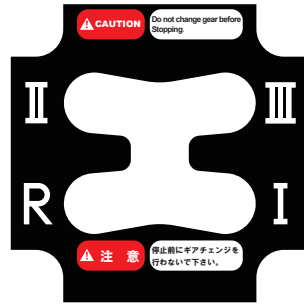
11



12



14



15



16



13



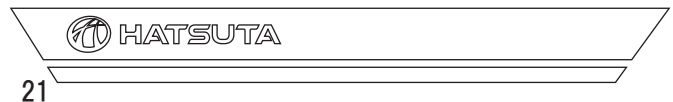
17



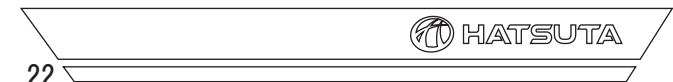
18



19、20



21



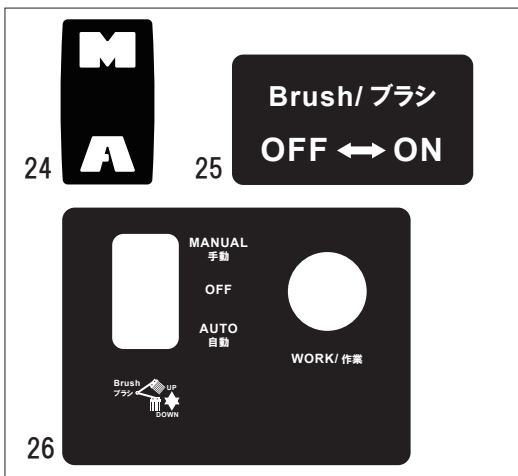
22

品番 (PARTS #)	品名 (PARTS NAME)	サイズ (SIZE)	数 (QTY)	取付位置 (INSTALLATION)	備考 (REMARKS)
ER39M0185	エアエレメント		1	エンジン	ENGINE
ER2724965	フォームエレメント		1	エンジン	ENGINE
ER4029325	オイルエレメント		1	エンジン	ENGINE
K22670104	ラムダ	40	1	SP REDUCER - CONVEYOR M	
K22670100	ラムダ	40	1	CONVEYOR M - CONVEYOR	
K22670102	ラムダ	40	1	M GEAR A - BRUSH M	
K22670103	ラムダ	40	1	BRUSH M - BRUSH	
K22650206	チェーンテンション	40	2	チェーンアクション	CHAIN TENSION
K01384300	Vベルト Super AG-X	V BELT SUPER AG-X LB-43	2	エンジンミッション	ENGINE - MISSION
K01383600	Vベルト Super AG-X	V BELT SUPER AG-X LB-36	1	エンジン 作業中間 A	ENGINE - OPERATION M A
K01384100	Vベルト Super AG-X	V BELT SUPER AG-X LB-41	1	作業中間 B 減速機中間	OPERATION M B - SP REDUCER M
K21610702A	DIFF・パーキングワイヤー		2		
K32850116	チョークワイヤー		1		
K32603000	アクセルワイヤー		1		
K32603301	クラッチワイヤー		1		

消耗部品リスト

23

オプション



24

25

26

